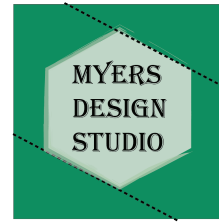


# Spring Wreath by Leah Myers



Trace the shapes on a piece of iron on fusible adhesive.

Fuse to fabric and then cut the shapes.

When fusing the flowers, follow the numbers to get the accurate flower shape.

Cut Our:

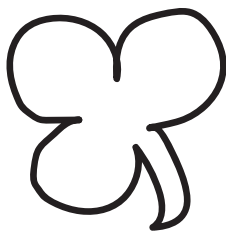
4 Large Flowers

4 Small Flowers.

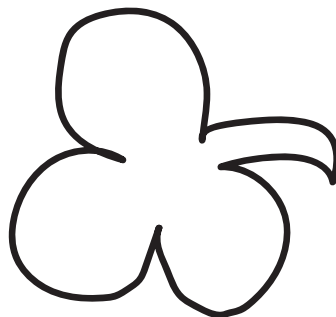
9 Large Clovers

9 Medium Clovers

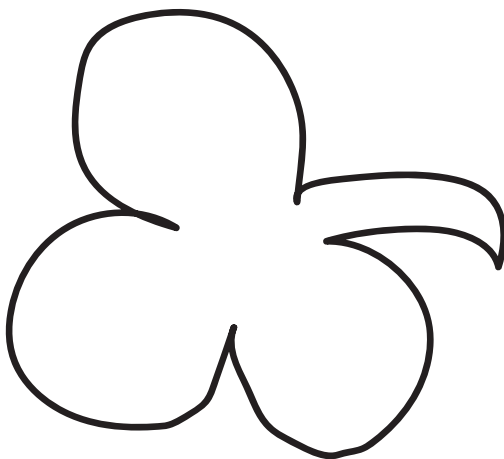
9 Small Clovers



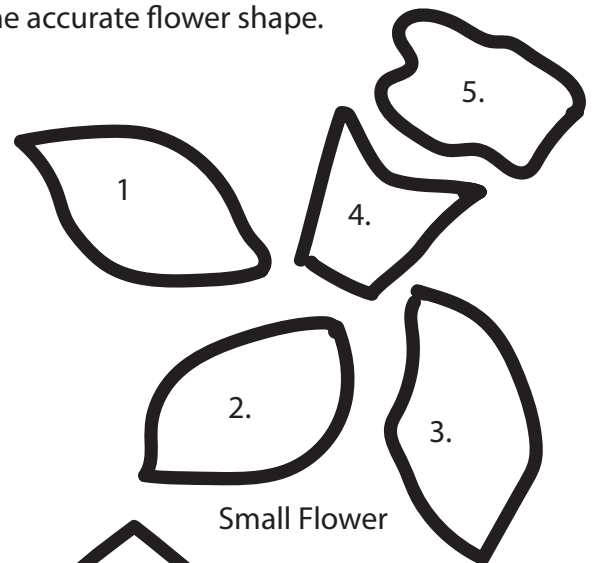
Small Clover



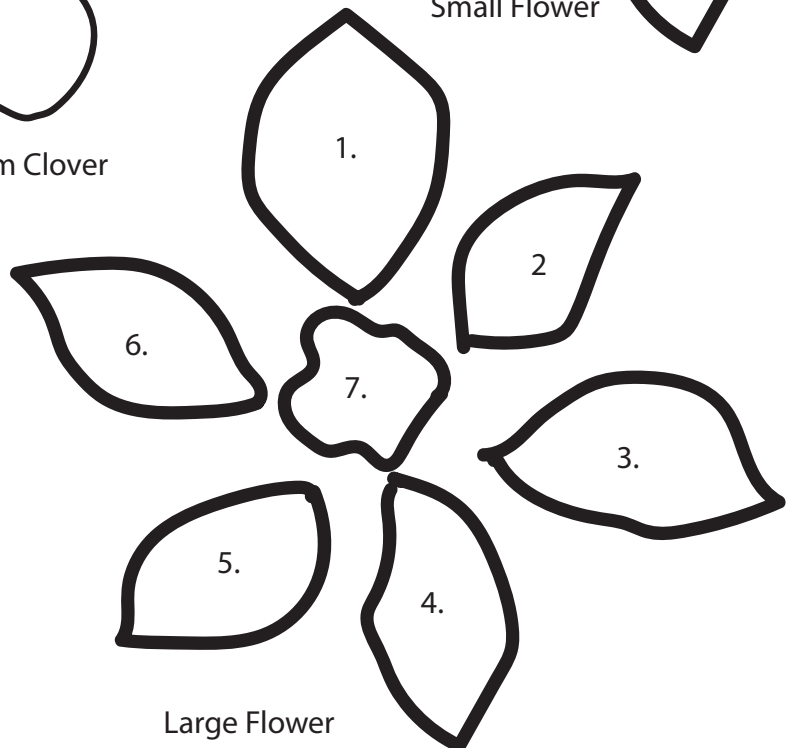
Medium Clover



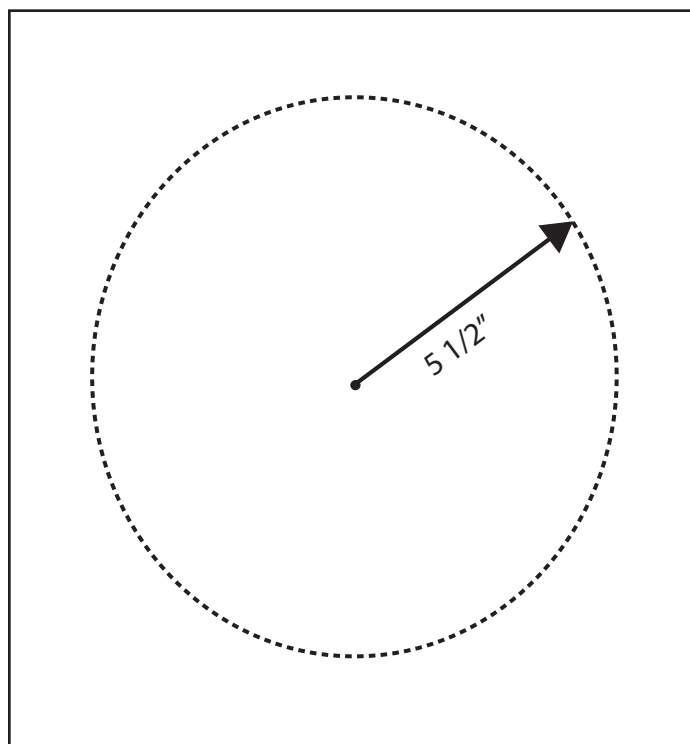
Large Clover



Small Flower



Large Flower



Draw a circle in the middle of a 16" square piece of fabric. Mark 5 1/2" from center to make the circle. Place the clovers and flowers on the dashed marked circle.

16"



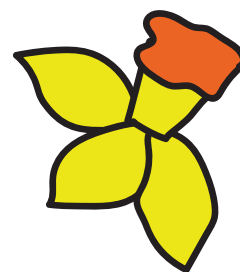
Small Clover



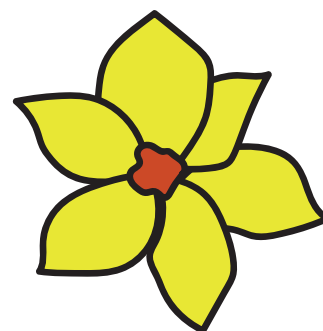
Medium Clover



Large Clover



Small Flower



Large Flower

